

## Effect of peak sun hour on energy productivity of solar photovoltaic power system

Prisma Megantoro<sup>1</sup>, Muhammad Akbar Syahbani<sup>1</sup>, Irfan Helmi Sukmawan<sup>1</sup>, Sigit Dani Perkasa<sup>1</sup>,  
Pandi Vigneshwaran<sup>2</sup>

<sup>1</sup>Faculty of Advanced Technology and Multidiscipline, Universitas Airlangga, Surabaya, Indonesia

<sup>2</sup>Department of CSE, SRM Institute of Science and Technology, Kattankulathur, India

### Article Info

#### Article history:

Received Apr 16, 2022

Revised Jun 28, 2022

Accepted Jul 14, 2022

#### Keywords:

Orientation

Peak sun hours

Photovoltaic system

Renewable energy

### ABSTRACT

A solar cell is a type of renewable energy engineering technology that can convert photons coming from the sun to be converted into electrical energy. The amount of energy that can be converted by a solar cell is determined by the effective insolation time. Peak sun hours (PSH) are the focus of this research. This PSH analysis aims to determine the potential for solar energy obtained in geographical locations throughout the year. Geographical location and the position of the astronomical coordinates of a certain area affect PSH. Therefore, the orientation of solar panel installation, including the height, slope, and latitude of the solar panel surface needs to be considered in order to get maximum solar energy. The results of this study can be used by technicians in determining the orientation of solar panel development in an area.

*This is an open access article under the [CC BY-SA](#) license.*



### Corresponding Author:

Prisma Megantoro

Faculty of Advanced Technology and Multidiscipline, Universitas Airlangga

St. Airlangga No. 4-6, Airlangga, Surabaya, East Java 60115, Indonesia

Email: prisma.megantoro@ftmm.unair.ac.id

## 1. INTRODUCTION

The application of renewable energy has begun to increase along with the high demand for electrification and concerns about climate change. The utilization of renewable energy is also carried out in the Universitas Airlangga. Universitas Airlangga is a study environment located in East Java with a wet tropical climate type with coordinates at latitude 7°16'1"S and longitude 112°47'7"E. In the study environment, a charging station for electric vehicles was built. To fulfill the necessity for electrification of the electric vehicle charging station, this station is equipped with solar panels with a capacity of 5.4 kW. In obtaining peak sun hours (PSH) data, output energy data is taken from Hoymiles microinverter data and is taken every 15 minutes at time intervals of 05:30-18:30.

Solar cells utilize solar energy to be engineered into energy through the photoelectric effect [1], [2]. Materials the amount of energy that can be converted into electrical energy depends on the length of solar irradiation and the size of the power of a solar panel (Watt peak). However, the length of time that the sun shines cannot be said to be effective time. The optimum conversion of solar energy occurs during insolation at the average maximum irradiation time or what is called PSH. PSH is a parameter that states the ratio of the maximum duration of solar radiation in hours per day to the standard intensity of solar radiation which is 1 kW/m<sup>2</sup> [3].

Basically, the solar insolation on the solar panel surface is fluctuating where the intensity increases in the morning and decreases in the afternoon. The effective duration of solar radiation for solar panels affects the high and low PSH. In its application, the photovoltaic semiconductor plate will receive maximum solar

irradiation if the direction of the incident photons is perpendicular to the surface of the solar panel [4], [5]. Thus, PSH has a value of 3-7 hours per day depending on the geographical and astronomical location of an area and the slope of the solar panel surface [6]–[10].

The main focus of this research is to analyze the actual value of PSH in Indonesia by using the location of Universitas Airlangga, Surabaya as the analyzing point. Second, with the PSH value determined by analyzing data from the field, it can be used to design a reliable solar photovoltaic power system in Indonesia. Analyzing the PSH value can be used to determine the size and configuration of solar panel array needed for the system. In addition, it can also be used to predict and optimize energy production in solar photovoltaic power systems.

## 2. METHOD

### 2.1. Photovoltaic effect

The conversion of solar energy into electrical energy occurs in photovoltaic semiconductor materials through a photoelectric process [11], [12].

$$E_k = W - W_o \quad (1)$$

Where  $E_k$  is the kinetic energy needed to move free electron to generate electricity,  $W$  is the photon energy and  $W_o$  is the material threshold energy obtained from:

$$W_o = h \frac{c}{\lambda} \text{ or} \quad (2)$$

$$W_o = h_f \quad (3)$$

where  $c$  is the Speed of light ( $3 \times 10^8 \text{ m/s}$ ).  $\lambda$  is wave length in meter.  $f$  is wave frequency (Hz).

### 2.2. Solar declination

The solar declination reading ( $\delta$ ) is obtained from the coordinates of the globe in terms of the equator coordinates. The value of solar declination is measured by measuring the angle between the equator drawn from the center of the earth to the center of the sun. The process of the earth around the sun on its polar axis can form a slope of  $0^\circ - 23,45^\circ$  [13].

$$\delta = 23,45^\circ \sin \left( 360^\circ \frac{284+n}{365} \right) \quad (4)$$

Where  $n$  is Julian day.

### 2.3. Latitude and longitude effect

The influence of the intensity of the sun is determined by the location of the area on the earth's surface [14], [15]. The position refers to the astronomical coordinates of latitude and longitude. Figure 1 below explains the solar path of the selected location. The solar path diagram illustrates the comparison of the azimuth to sun height in degrees for an annual cycle. It can be used as a reference for an overview of solar resources within a particular location.

### 2.4. Tilt

Solar energy can convert maximally into electrical energy if the surface of the solar panel is perpendicular to the direction of the sun's rays (source). The orientation of the construction of solar panels must pay attention to the position of the sun, longitude and latitude [16]–[18]. This is because each region based on geographical and astronomical aspects has a different position.

$$\beta_{max} = \emptyset - \delta \quad (5)$$

Where:

$\beta_{max}$  : Optimal tilt angle

$\emptyset$  : Longitude area

$\delta$  : Declination angle

Figure 2 shows the tilt angle of the installed solar cell in Universitas Airlangga. The measurement of the solar panel is conducted by applying magnetic water pass directly into the solar panel. This method can be reassured by using (5).

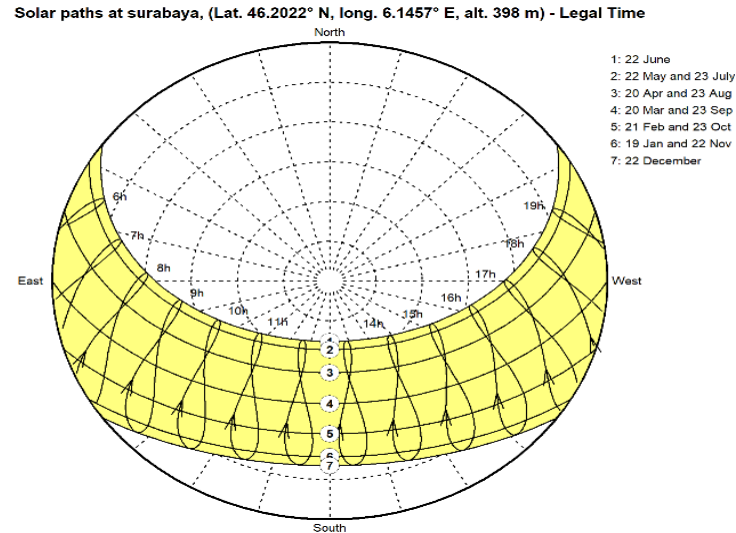


Figure 1. Solar paths based on coordinate of Surabaya, East Java (PVsyst 7.2)

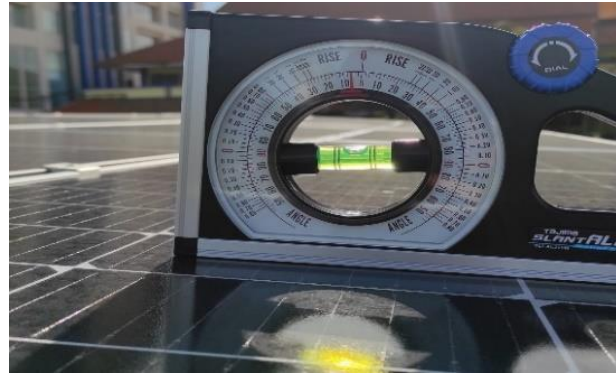


Figure 2. Tilt angle of solar cell in Airlangga University

## 2.5. Determine peak sun hour

PSH take the solar irradiation interval when energy output increases by 60% until the output decreases by 60% [19], [20]. The process of obtaining Peak Sun Hour (PSH) value can be done by using the equation of nominal peak power or (5). after the maximum output value is obtained, the PSH value can be determined by substituting the peak power value into the equation.

$$P_{pv} = \frac{P_{load}}{PSH \cdot \eta_{system}} \quad (6)$$

Where:

- $P_{pv}$  : Nominal peak power (W)
- $P_{load}$  : Total energy demand (W)
- PSH : Peak Sun Hours (hour)
- $\eta_{system}$  : System efficiency (%)

## 2.6. Irradiance factor

Solar radiation is the power per unit area received from the sun in the form of electromagnetic radiation measured in the wavelength range of the measuring instrument [21]. Irradiation can be measured in space or at the earth's surface after absorption and scattering of the atmosphere. Irradiation plays a role in predicting the energy productivity of solar power plants. The distribution of irradiation levels across the Java Archipelago is described in Figure 3, with the selected location represented in the figure as the blue mark. The figure explains the irradiation factor within a color range from yellow as lower to orange as the higher value.

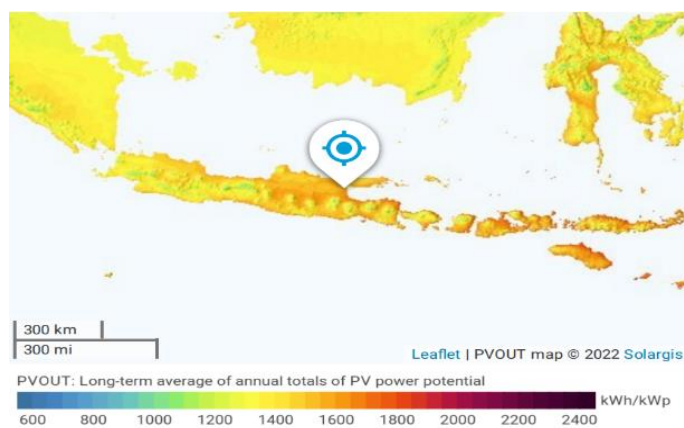


Figure 3. Solar map in Java Archipelago (map solar irradiance on data of year 2021, ENERGYDATA.INFO)

### 3. RESULTS AND DISCUSSION

In this section will explain the PSH analysis of solar cells found at Universitas Airlangga. In the previous section, the method to get the PSH value was explained and the things that affect the PSH value such as the photovoltaic effect, solar declination, longitude and latitude, tilt surface, and irradiance factor. Through the described method, a graph of the PSH value will be displayed at the observation location. The installed photovoltaic system in the observation location is equipped with a monocrystalline type solar cell which is shown in Figure 4(a), and a panel box with a display to present solar measurement parameters, which are shown in Figure 4(b).



(a)



(b)

Figure 4. 5.4 kWp photovoltaic power plant installation in Universitas Airlangga (a) the photovoltaic array, and (b) the control panel

#### 3.1. Peak sun hours analysis

The energy output produced by the solar cell shows a different amount of energy conversion every day. The fluctuating energy output is due to the PSH factor [22]. The PSH value that is less makes the need for solar cells increase. The location of Airlangga University, Surabaya, Indonesia, has an average PSH value of 4.5 hours/day.

Figure 5 shows the data for calculating the PSH solar cell of 5.4 kWh which is calculated manually through real-time solar power station monitoring (S-miles cloud). The value shown by the graph is the PSH value measured at 12 hour intervals. From the graph, it can be seen that the PSH value fluctuates. This fluctuating value is caused by weather factors that can make insolation not optimal and have an impact on low solar irradiation values.

Figure 6 shows the results of the energy output that can be used for electrification of electricity needs. The measurement results are obtained through real time measurements for 3 months. The results obtained, are the results obtained from the average energy output at the PSH interval (4.5 hours) according to the PSH value of the research results. Based on the results shown in Figures 5 and 6, there is a correlation that shows results that are directly proportional to PSH and energy output. From the graph shown, it can be seen that the low PSH in a period will affect the low energy output (and vice versa).

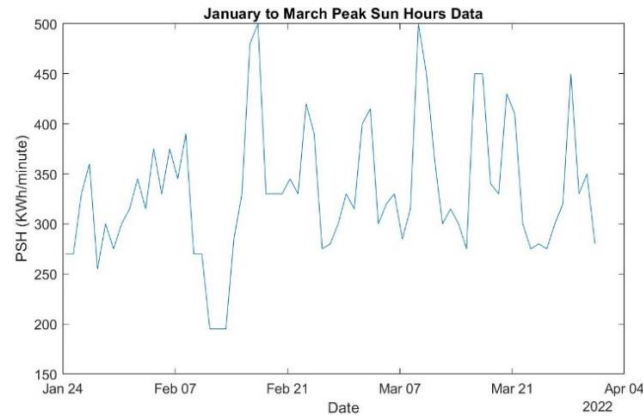


Figure 5. PSH data collection from hoymiles microconverter

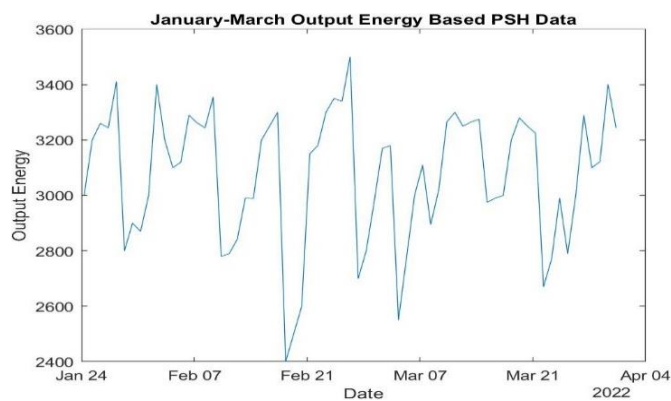


Figure 6. Energy output based on PSH data

Figure 7 shows the results of the power output starting from sunrise to sunset. The power output shown every hour is the result of the average power output for 3 months. The first red line showed in the Figure 7 (the left one) is the time of PSH start point, which more than 60% of the peak power is reached. Besides, the second red line (the right one) is the time when PSH is ended. This means the power decrease into less than 60% of peak power. Based on this average value, the PSH zone can be determined, namely in the graph area bounded by the red line. The PSH solar cells are at intervals from 09:30 to 14:00 (4.5 hours). This PSH value will be used to determine the optimal hour for converting solar energy into electrical energy.

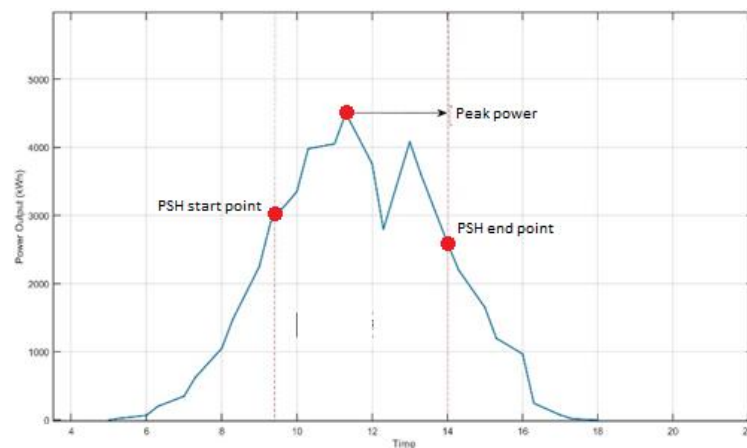


Figure 7. Energy output based on PSH data

### 3.2. Energy output from solar cell

The on grid solar cell photovoltaic installed in the Airlangga University study area has a capacity of 5.4 kWh a 24 Volt system. The normalized energy, performance ratio, global incident in coll, and power injected into grid values are values analyzed using PVsyst software. The orientation of the PVsyst has been adjusted including geographical and astronomical coordinates, the slope of the solar cell surface, and solar irradiation data for the area (Airlangga University, East Java) for one year. Thus, the PSH value and energy output from solar panels can be analyzed regarding the relationship between analyzed from the software.

Figure 8 explains the system's capability in producing power month-by-month in a year. The figure shows the system's daily useful energy referred to the nominal power and the losses that occurred. Those losses include the collection losses that happened because of thermal, wiring, shading, or other inefficiencies [23], [24]. Also, the system loss which in the case of the proposed method happened because of inverter inefficiencies [25]–[27]. While Figure 9 shows the system's effectiveness in producing energy if the system continuously working.

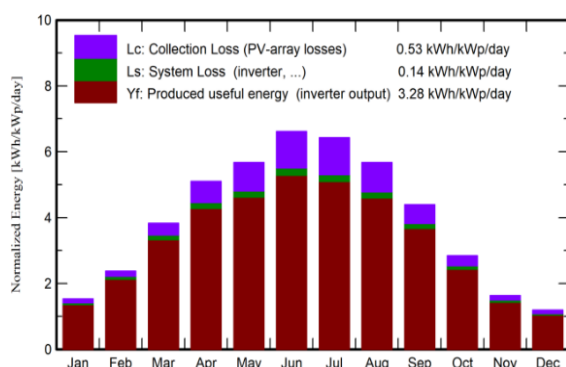


Figure 8. Energy productivity every month

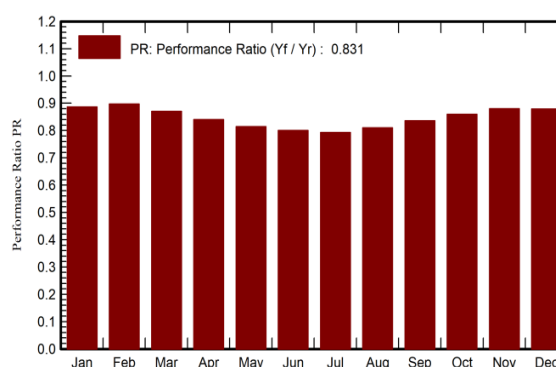


Figure 9. Monthly performance ratio

Figure 10 shows a graph that represents the photovoltaic daily production. The graph shows a correlation between daily irradiation and system daily productivity. While Figure 11 shows the accumulations of all energies registered by the system during the simulation period, with the instantaneous output power injected into the grid [28]–[30].

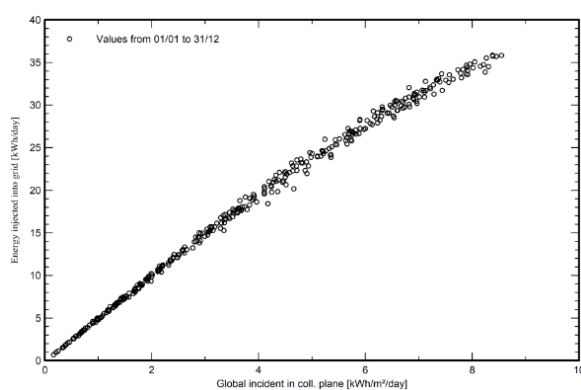


Figure 10. Daily energy supply to daily irradiation

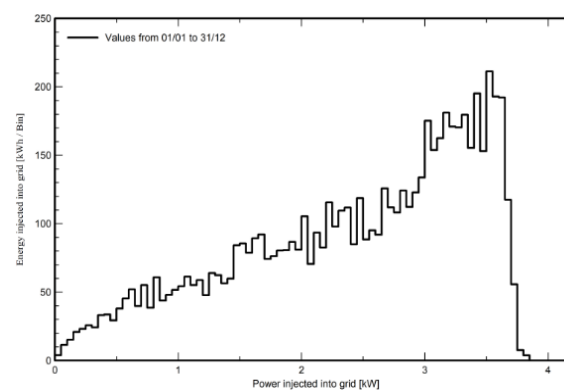


Figure 11. Power and energy supply

## 4. CONCLUSION

PSH is an indicator that determines the amount of energy output required in the installation of solar panels, especially on 5.4 kWh solar panels in the Airlangga University area, Surabaya, East Java. Based on PSH data collection using the observation method, the average PSH in the observation area was 4.5 hours. The PSH value can produce an average energy of 3.28 kWh/day and a performance ratio value of 0.831. Thus, the analysis of the PSH value can be a reference for technicians and renewable energy consumers in solar panel installations.



## ACKNOWLEDGEMENTS

The authors would like to thank Universitas Airlangga for providing facilities. We also thank all colleagues and students of Electrical Engineering from the Faculty of Advance Technology and Multidiscipline, Airlangga University for their support for this research.




## REFERENCES

- [1] G. H. Wang *et al.*, "Performance characterization for bifacial photovoltaic modules," *2019 IEEE 46<sup>th</sup> Photovoltaic Specialists Conference (PVSC)*, pp. 2778–2780, 2019, doi: 10.1109/PVSC40753.2019.8980710.
- [2] A. C. Killam, J. F. Karas, A. Augusto, and S. G. Bowden, "Monitoring of photovoltaic system performance using outdoor suns-VOC," *Joule*, vol. 5, no. 1, pp. 210–227, Jan. 2021, doi: 10.1016/j.joule.2020.11.007.
- [3] C. Pica, R. Munteanu, S. Pavel, and H. Beleiu, "Modeling of photovoltaic panels," *2018 International Conference and Exposition on Electrical And Power Engineering (EPE)*, 2018, pp. 0769–0773, doi: 10.1109/ICEPE.2018.8559884.
- [4] S. Yoshida, S. Ueno, N. Kataoka, H. Takakura, and T. Minemoto, "Estimation of global tilted irradiance and output energy using meteorological data and performance of photovoltaic modules," *Solar Energy*, vol. 93, pp. 90–99, Jul. 2013, doi: 10.1016/j.solener.2013.04.001.
- [5] C. F. Abe, J. B. Dias, G. Notton, and P. Poggi, "Computing solar irradiance and average temperature of photovoltaic modules from the maximum power point coordinates," *IEEE Journal of Photovoltaics*, vol. 10, no. 2, pp. 655–663, 2020, doi: 10.1109/JPHOTOV.2020.2966362.
- [6] L. Tian, Y. Huang, S. Liu, S. Sun, J. Deng, and H. Zhao, "Application of photovoltaic power generation in rail transit power supply system under the background of energy low carbon transformation," *Alexandria Engineering Journal*, vol. 60, no. 6, pp. 5167–5174, 2021, doi: 10.1016/j.aej.2021.04.008.
- [7] S. Jain, C. Karmann, and J. Wienold, "Behind electrochromic glazing: Assessing user's perception of glare from the sun in a controlled environment," *Energy and Buildings*, vol. 256, p. 111738, 2022, doi: 10.1016/j.enbuild.2021.111738.
- [8] N. Pichel, M. Vivar, and M. Fuentes, "Optimization study of a photovoltaic-photochemical hybrid system (SOLWAT) for meeting the needs of electricity and clean water," *2018 IEEE 7th World Conference on Photovoltaic Energy Conversion (WCPEC) (A Joint Conference of 45th IEEE PVSC, 28th PVSEC & 34th EU PVSEC)*, Jun. 2018, pp. 1222–1224, doi: 10.1109/PVSC.2018.8547320.
- [9] O. F. Alrawi, T. Al-Siddiqi, A. Al-Muhannadi, A. Al-Siddiqi, and S. G. Al-Ghamdi, "Determining the influencing factors in the residential rooftop solar photovoltaic systems adoption: Evidence from a survey in Qatar," *Energy Reports*, vol. 8, pp. 257–262, 2022, doi: 10.1016/j.egyr.2022.01.064.
- [10] A. R. Jensen, I. Sifnaios, S. Furbo, and J. Dragsted, "Self-shading of two-axis tracking solar collectors: Impact of field layout, latitude, and aperture shape," *Solar Energy*, vol. 236, pp. 215–224, 2022, doi: 10.1016/j.solener.2022.02.023.
- [11] P. Bharadwaj and V. John, "Shading fraction based global maximum power prediction for photovoltaic energy conversion systems," *2018 IEEE 7th World Conference on Photovoltaic Energy Conversion (WCPEC) (A Joint Conference of 45th IEEE PVSC, 28th PVSEC & 34th EU PVSEC)*, 2018, pp. 1163–1168, doi: 10.1109/PVSC.2018.8547361.
- [12] P. Li, X. Gao, Z. Li, and X. Zhou, "Effect of the temperature difference between land and lake on photovoltaic power generation," *Renewable Energy*, vol. 185, pp. 86–95, 2022, doi: 10.1016/j.renene.2021.12.011.
- [13] N. F. B. Ibrahim, Z. Bin Abu Bakar and W. S. B. W. Ibrahim, "The feasibility study of solar PV lighting: In Universiti Teknologi MARA Sarawak," *2016 IEEE Industrial Electronics and Applications Conference (IEACon)*, 2016, pp. 92–96, doi: 10.1109/IEACon.2016.8067362.
- [14] J.-R. Rodríguez-Ossorio, A. González-Martínez, M. de Simón-Martín, A.-M. Díez-Suárez, A. Colmenar-Santos, and E. Rosales-Asensio, "Levelized cost of electricity for the deployment of solar photovoltaic plants: The region of León (Spain) as case study," *Energy Reports*, vol. 7, pp. 199–203, 2021, doi: 10.1016/j.egyr.2021.06.034.
- [15] E. Ndzibah, G. A. Pinilla-De La Cruz, and A. Shamsuzzoha, "Collaboration towards value creation for end-of-life solar photovoltaic panel in Ghana," *Journal of Cleaner Production*, vol. 333, p. 129969, 2022, doi: 10.1016/j.jclepro.2021.129969.
- [16] C. Stanciu and D. Stanciu, "Optimum tilt angle for flat plate collectors all over the world-a declination dependence formula and comparisons of three solar radiation models," *Energy Conversion and Management*, vol. 81, pp. 133–143, 2014, doi: 10.1016/j.enconman.2014.02.016.
- [17] Z. Wang, H. Zhang, B. Dou, G. Zhang, and W. Wu, "Theoretical and experimental evaluation on the electrical properties of multi-junction solar cells in a reflective concentration photovoltaic system," *Energy Reports*, vol. 8, pp. 820–831, 2022, doi: 10.1016/j.egyr.2021.12.018.
- [18] N. N. Ramli and S. Walker, "Pan-global, annualized determination of solar collector optimum tilt angle," *2015 7th International Conference on Modelling, Identification and Control (ICMIC)*, 2015, pp. 1–4, doi: 10.1109/ICMIC.2015.7409455.
- [19] U. Y. Tito, L. Quispe-Huaman, and O. -A. Vilca-Huayta, "Evaluation of the peak-sun hour on a tilted surface in the City of Juliaca," *2020 IEEE XXVII International Conference on Electronics, Electrical Engineering and Computing (INTERCON)*, 2020, pp. 1–4, doi: 10.1109/INTERCON50315.2020.9220191.
- [20] D. H. W. Li and T. N. T. Lam, "Determining the optimum tilt angle and orientation for solar energy collection based on measured solar radiance data," *International Journal of Photoenergy*, vol. 2007, 2007, doi: 10.1155/2007/85402.
- [21] G. Etxegarai, A. López, N. Aginako, and F. Rodríguez, "An analysis of different deep learning neural networks for intra-hour solar irradiation forecasting to compute solar photovoltaic generators' energy production," *Energy for Sustainable Development*, vol. 68, pp. 1–17, 2022, doi: 10.1016/j.esd.2022.02.002.
- [22] L. L. Li, S. Y. Wen, M. L. Tseng, and C. S. Wang, "Renewable energy prediction: A novel short-term prediction model of photovoltaic output power," *Journal of Cleaner Production*, vol. 228, pp. 359–375, 2019, doi: 10.1016/j.jclepro.2019.04.331.
- [23] C. J. Smith, P. M. Forster, and R. Crook, "Global analysis of photovoltaic energy output enhanced by phase change material cooling," *Applied energy*, vol. 126, pp. 21–28, 2014, doi: 10.1016/j.apenergy.2014.03.083.
- [24] M. Alam, K. Kumar, J. Srivastava, and V. Dutta, "A study on DC microgrids voltages based on photovoltaic and fuel cell power generators," *2018 7th International Conference on Renewable Energy Research and Applications (ICRERA)*, 2018, pp. 643–648, doi: 10.1109/ICRERA.2018.8566854.
- [25] Y. Liu, "Research of automatic monitoring and control strategy of photovoltaic power generation system," *2018 International Conference on Virtual Reality and Intelligent Systems (ICVRIS)*, 2018, pp. 343–347, doi: 10.1109/ICVRIS.2018.00090.
- [26] C. A. Saleel, "Forecasting the energy output from a combined cycle thermal power plant using deep learning models," *Case Studies in Thermal Engineering*, vol. 28, p. 101693, 2021, doi: 10.1016/j.csite.2021.101693.




- [27] S. M. Aarakit, J. M. Ntayi, F. Wasswa, M. S. Adaramola, and V. F. Ssenono, "Adoption of solar photovoltaic systems in households: evidence from Uganda," *Journal of Cleaner Production*, vol. 329, p. 129619, 2021, doi: 10.1016/j.jclepro.2021.129619.
- [28] S. P. Koko, "Optimal battery sizing for a grid-tied solar photovoltaic system supplying a residential load: A case study under South African solar irradiance," *Energy Reports*, vol. 8, pp. 410–418, 2022, doi: 10.1016/j.egyr.2022.02.183.
- [29] Y. Cao, A. Sha, Z. Liu, J. Li, and W. Jiang, "Energy output of piezoelectric transducers and pavements under simulated traffic load," *Journal of Cleaner Production*, vol. 279, p. 123508, 2021, doi: 10.1016/j.jclepro.2020.123508.
- [30] G. G. Dranka, P. Ferreira, and A. I. F. Vaz, "Integrating supply and demand-side management in renewable-based energy systems," *Energy*, vol. 232, p. 120978, 2021, doi: 10.1016/j.energy.2021.120978.

## BIOGRAPHIES OF AUTHORS






**Prisma Megantoro**    is a lecturer in Electrical Engineering, School of Advanced Technology, and Multidiscipline, Universitas Airlangga since 2020. He received a bachelor's degree and master's degree from Universitas Gadjah Mada, Yogyakarta, Indonesia in 2014 and 2018. His current research is focused on solar photovoltaic technology, embedded system, and the internet of things. He can be contacted at email: prisma.megantoro@ftmm.unair.ac.id.






**Muhammad Akbar Syahbani**    was born in Nusa Tenggara Barat, Indonesia in 2001, after graduating from high school he continued his studies in electrical engineering at the Universitas Airlangga in 2020. Now he is active in research on renewable energy in Universitas Airlangga Research Community. He can be contacted at email: muhammad.akbar.syahbani-2020@ftmm.unair.ac.id.






**Irfan Helmi Sukmawan**    was born in East Java, Indonesia in 2001. He has completed his high school education and continued his study of electrical engineering at Airlangga University in 2020. Now he is active in renewable energy research in the Airlangga University research community. He can be contacted at email: irfan.helmi.f-2020@ftmm.unair.ac.id.



**Sigit Dani Perkasa**    was born in Surabaya, Indonesia in 2002. He is a second year Electrical Engineering student at Universitas Airlangga. He is active in the Instrumentation Research Group. He is also a member of Research and Development division in Universitas Airlangga's Robotic Community and participating in the Indonesian Soccer Robot Contest. He can be contacted at email: sigit.dani.perkasa-2020@ftmm.unair.ac.id.



**Pandi Vigneshwaran**    has obtained his Doctoral Degree in Anna University Chennai during 2016 and Master of Engineering under Anna University Chennai during June 2005. He is having 18.4 years of experience and specialization in Cybersecurity. Presently, He is working as Associate Professor in SRM Institute of Science and Technology, Chennai. His area of interest includes security, routing, and intelligent data analysis. He can be contacted at email: vigenesp@srmist.edu.in.